




Share:  Facebook  Twitter

Connect: 



Christmas won't come until January 6th... in Armenia, and many still await Santa or *Gaghant Baba* until December 31!

As we celebrate the Holy Birth, we consider how God's love is still coming to life among us today:

- Sheltering a family in Syria where war has driven them from their home
- Aiding refugees and the unemployed in Lebanon
- Bringing life-saving cancer screenings to remote Armenia

During this important centennial year, Jinishian helped Presbyterians observe the Armenian Genocide in churches around the U.S. And hundreds of new friends joined us to celebrate Mr. Jinishian's legacy in Los Angeles last June. Thank you to all who made the occasion so meaningful! Most memorable was [Talin's message from Syria](#). There are many ways you can still [contribute](#) before year-end. We honor your trust in us as we continue pursuing the most effective programs we can create to meet the greatest needs among Armenian communities.

A handwritten signature in black ink, appearing to read "Eliza Minasyan".

Eliza Minasyan

Executive Director, Jinishian Memorial Program

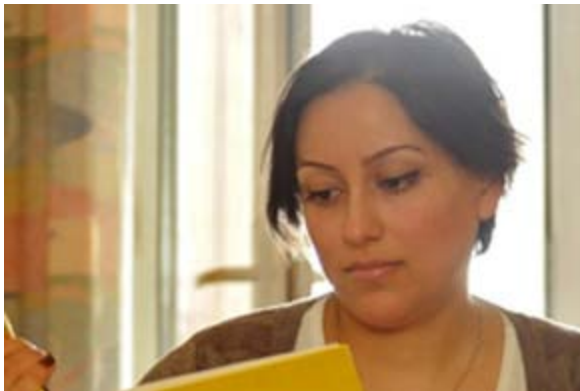




Giving catalog. Choose direct giving to specific projects closest to your heart, from sponsoring students for debate or vocational school to bringing electricity to an apartment in Aleppo.



Syria update. Five years of war has left every Armenian family with barely enough to survive. We've helped 6,000 people in 2015, our doors open daily with aid and encouragement.



Free cancer screenings. Armenia has the highest death rate for breast cancer in the world. Our newest program brings free screenings to women in Vardenis with no other access to care.



Revival on the border. A typical day in Aygehovit village begins with shooting from the Azerbaijani border, but our cultural life project has brought new life to this community.



Visiting Armenia *"My favorite part was watching Jinishian work in person and interacting with the students and farmers who are succeeding with help from Jinishian's programs. They treated us as honored guests, but we were the ones who were awed and impressed by their ingenuity and dedication."* said Tanya Karimi of Colorado Springs who visited with a [World Mission Initiative](#) trip in October.

Check out Tanya's blog for a day by day account of the trip!

Over 50 years after meeting Mr. Jinishian in New York, the Rev. Vartkes Kassouni traveled to Armenia to see with his own eyes the complete dedication of those who serve through the legacy of Jinishian's gift. *"We covered city and country, mountain and valley, village and farm, church and cathedral, adults and children, farmers and workers, teachers and students, priests and laypeople. We broke bread with the people in their homes. We ate delicious ripe apricots and cherries sold along the way, right next to the trees loaded with fruit."* [Read the Rev. Kassouni's full letter.](#)

Consider visiting Armenia with Jinishian in 2016 and experience a close connection with our people! Journey to this beautiful, ancient Christian homeland with a focus on culture, outreach, and faith. Enjoy worship, warm hospitality and discussions with all three ecumenical church partners – Apostolic, Catholic and Evangelical. Hosted by local Jinishian team members, the tour includes hands-on visits to faith-based community development projects throughout this post-Soviet republic. Contact us to plan your trip!

"All I can say is, go...and let the people, their faith and the landscapes draw you into their embrace."
From the [Rev. Charlie Hammil's blog](#), Pittsburgh, PA

Save the date!

- "Celebrate 50 years with the Jinishian Memorial Program" dinner at the 222nd General Assembly in Portland, Oregon, at the Convention Center on June 23, 2016, 5:30–7 p.m.
- Connect with Jinishian at the New Wilmington Mission Conference in Pennsylvania, July 23–30th, 2016.
- Stay tuned for more 2016 events in your area. Contact us if you'd like to set something up.

The Jinishian Memorial Program addresses the needs of the whole person—social, economic and spiritual. Drawing on half a century of experience, we also adapt and innovate, adjusting priorities according to particular conditions in Armenia, Lebanon and Syria, as well as Istanbul, Jerusalem, Nagorno-Karabakh and Georgia. Local community development is fueled by over 150 grassroots and international partnerships. As an endowment fund of the Presbyterian Church (U.S.A.) advised by Apostolic, Catholic, and Evangelical board members, we serve struggling Armenian communities through faith-based relief and development programs on a budget of \$1.2 million annually. Read our summary [2015 Annual Report](#).

Whether giving by mail or [online](http://www.pcusa.org/jinishian) (www.pcusa.org/jinishian and click "Donate now"), you may always include a note in the memo line to direct your gift to those projects most important to you. We'd love to hear from you!



Jinishian Memorial Program
381 Park Avenue South, Suite 617

New York, NY 10016

<mailto:jinishian@pcusa.org>

800-728-7228 (x5291)

Executive Director [Eliza Minasyan](#) or 502.544.9294

Administrative Assistant [Cara Taylor](#) or 210.844.9030

You are receiving this email because you have signed up for information and resources related to the Jinishian Memorial Program.

Presbyterian Mission Agency, an agency of the Presbyterian Church
100 Witherspoon Street
Louisville, KY 40202
800-728-7228 | 502-569-5000
[Website](#) | [Email](#) | [Privacy Policy](#)